

# OTTAWA COUNTY GIS NEWS LETTER

Spring 2014



## Highlights

- Introduction
- 2014 Aerial & Oblique Imagery
- Pictometry Connect Training
- Environmental Health, Web Editing Application
- Damage Assessment, Web Editing Application
- 2014 Ottawa County Plat Book



*Pictometry® Oblique Imagery*  
Windmill Island  
Holland, Mi (2007)

## Introduction

The Ottawa County GIS newsletter contains information on major GIS projects and applications, cooperative work with Local, State and Federal agencies, links to other GIS programs and web sites, as well as updates on regional meetings, seminars, and training opportunities.

## 2014 Aerial & Oblique Imagery

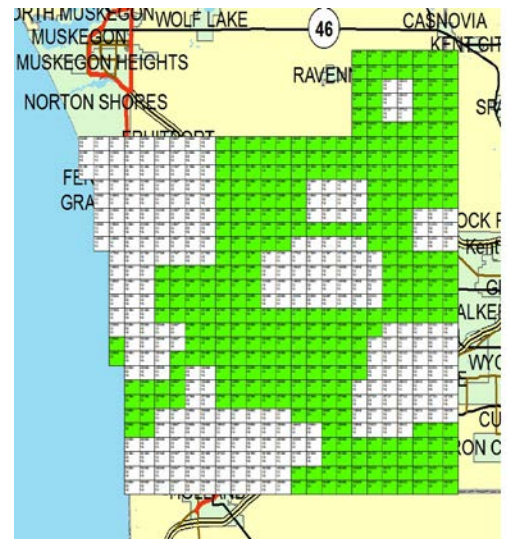
Ottawa County GIS has contracted with Pictometry® to deliver both aerial (top-down view) & oblique images (45 degree view) for the entire county. Pictometry® is scheduled to capture the images in the early part of spring 2014. The images will be processed and delivered 30-60 days after the capture is complete.

The aerial and oblique images will consist of a Neighborhood level (3" resolution) for the areas in white (see map to the right), and a Community level (9" resolution) for the areas in green.

In addition to the images Ottawa County has purchased Pictometry® Connect. Pictometry® Connect is a secure, web-based solution that combines high resolution aerial imagery with customer GIS data to create a powerful system that is easily accessible and interactive. Users can upload, view, and analyze their location-based data against the

backdrop of the highest quality aerial imagery in the world.

[Continued on page 2.](#)



## Contact info:

Shane Pavlak  
GIS Supervisor  
[spavlak@miottawa.org](mailto:spavlak@miottawa.org)  
616-738-4602

# GIS Training, Applications, & Data



For further information on Pictometry  
<http://www.pictometry.com/>



For further information on Geocortex  
<http://www.geocortex.com/arcgis-server-software/geocortex-essentials/>

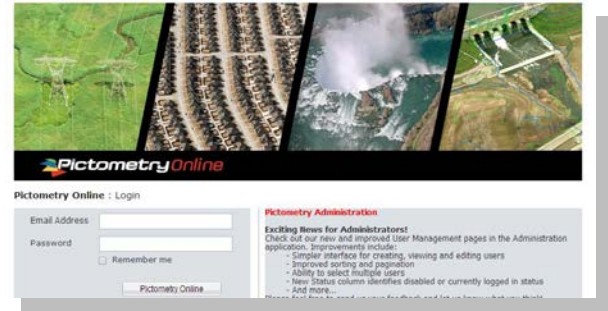


For further information on Ottawa County's Interactive Mapping site  
<http://www.gis.miottawa.org/>

Continued from page 1.

Ottawa County departments and agencies partnered with Ottawa County GIS will have access to the Pictometry® images through a secured login at Pictometry® Online.

<https://pol.pictometry.com/en-us/app/login.php>



## Pictometry® Online Training

Ottawa County GIS and Pictometry® will be providing training for Pictometry® Online to all Ottawa County departments and to agencies partnered with Ottawa County GIS in late spring.

Look for further information to be posted on our website and distributed by email.

<http://miottawa.org/Departments/GIS/>

## Environmental Health, Web Editing Application

Ottawa County GIS has been working closely with the Environmental Health Field team to develop an application that enhances the mapping of wells and septic systems in Ottawa County.

Database.

This application will be used as a template for future applications developed for Ottawa County departments and agencies partnered with Ottawa County GIS.

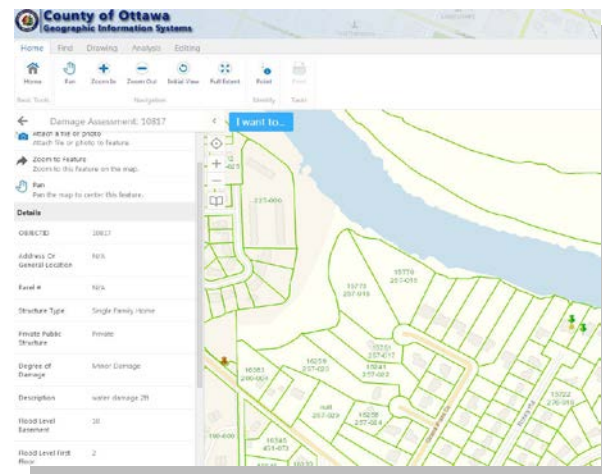
This unique application allows for edits to be done from any location, and in real-time. It does not require any additional software to be installed in order to be used, and can be used in any browser.



This application has been developed using Geocortex Essentials and leverages Ottawa County's ArcGIS Server and Enterprise Spatial

## Damage Assessment, Web Editing Application (Beta)

Ottawa County GIS has been working with Ottawa County's Emergency Management Unit to develop a web-based application that can be used on mobile devices. The application is currently in Beta testing.



When completed this application would allow the capturing of the point location, extent of damage information, and photos of the reported damage.



Ottawa County GIS  
12220 Fillmore St Suite 320  
West Olive, MI 49460

Phone:  
(616) 738-4600

Fax:  
(616) 738-4610

E-Mail:  
[gisdept@miottawa.org](mailto:gisdept@miottawa.org)

## Additional GIS Links:

[www.esri.com](http://www.esri.com)

[www.imagin.org](http://www.imagin.org)

[www.michigan.gov/cqi](http://www.michigan.gov/cqi)

[gvmc-regis.org](http://gvmc-regis.org)

[www.muskegoncountygis.com](http://www.muskegoncountygis.com)

[www.allegancounty.org/Government/LIS](http://www.allegancounty.org/Government/LIS)

[www.accesskent.com/Departments/GIS](http://www.accesskent.com/Departments/GIS)

We're on the Web!

Visit us at:  
<http://www.gis.miottawa.org>

# 2014 Ottawa County Plat Book

The latest version of the Ottawa County Plat Book is now available from Ottawa County GIS. The book features 2013 parcel ownership information as well as other updated County information and maps.

The Plat Book offers an authoritative guide to land ownership in the County, with exclusive maps which display ownership of all township parcels 10 acres or larger. In addition, the Plat Book provides a number of other reference maps as well as new features made possible through the County GIS Department's unique mapping capabilities.

For the first time the Plat Book will also be offered as an enhanced PDF. The user of the PDF will be able to navigate the PDF by clicking on different areas of the page.

The Plat Book is a cooperative project with the Ottawa County MSU Extension and the Ottawa County 4H Club. All advertising proceeds for the Plat Book as well as a portion of the sale of each book sold go to the 4-H Club. Books can be ordered via the County website ([www.miottawa.org/Departments/GIS/platbook.htm](http://www.miottawa.org/Departments/GIS/platbook.htm)) or by contacting Ottawa County GIS at (616) 738-4600. The cost for a printed book is \$25. The cost for the enhanced PDF is \$15. If ordered together the cost is \$35.

